



Understand the Rules

To help sidewalk vendors navigate legal requirements and operate safely within the county, see snapshot of key information below. For a complete understanding of all regulations, please read the [Sidewalk Vending Ordinance](#) and [SB 972](#).

Two Types of Sidewalk Vendors

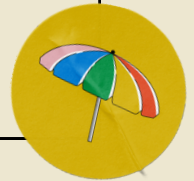
Sidewalk Vendors are part of LA County's "open-air economy" and are individuals who sell food or merchandise from a pedestrian path or sidewalk. There are two types of sidewalk vendors in LA County: Stationary Vendor or Roaming Vendor



Roaming Sidewalk Vendor is a sidewalk vendor who moves from place to place on a sidewalk or pedestrian path and stops only to complete a customer transaction for no longer than a 15-minute period.



Stationary Sidewalk Vendor is a sidewalk vendor who vends from a fixed location.



What You Can Sell

Before starting your sidewalk vending business, view the list of approved items, either retail or food, you can sell.



Retail sales include clothing, household items, gifts, flowers, cards, handmade items, and more.



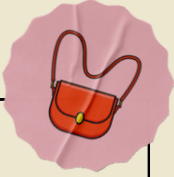
Food allowable without a Health Permit are items such as whole fruits, vegetables and prepackaged from a store (chips, sodas, snacks) under 25 square feet or (5 feet by 5 feet space)



Sale of other types of food may require one or more types of Health Permits issued through the [LA County Department of Public Health](#).



DO'S and DON'TS



DO's of Sidewalk Vending



Roaming Sidewalk Vendors are permitted to vend in residential and non residential areas and must move continuously, except when conducting a sale, which must last no more than fifteen (15) minutes. In no event may a Roaming Sidewalk Vendor conduct their activity in a residential area in such a manner to constitute operating in a fixed location.



Any vendor operating within the allowed hours must respect the communities in which they operate and avoid loud, and unreasonable noises as specified in the California Penal code.



In residential areas, roaming sidewalk vendors may operate between 9:00 am. and 9:00 pm.



In nonresidential areas, a roaming or stationary vendor may operate between the hours of 6:00 am. and 12:00 am., or the hours of operation imposed on other businesses on the same street or block, whichever is least restrictive.



Sidewalk Vendors of Food must adhere to County Public Health Department permit requirements pursuant to Title 11 of the County Code and applicable requirements of the California Health and Safety Code.

DON'TS of Sidewalk Vending



Sidewalk Vendors must not connect to any public utilities, including any source for water or power.



Sidewalk Vendors must not obstruct or hinder pedestrian or vehicle flow, or place any equipment, food, or merchandise on the Sidewalk or Pedestrian Path which may hinder pedestrian safety or vehicle visibility.



Sidewalk Vendors are prohibited in areas with no Sidewalk a Pedestrian Path when a Sidewalk or Pedestrian Path is less than six (6) feet wide, since such activity would unreasonably interfere with the safe flow of pedestrians and vehicles.



Stationary Sidewalk Vendors are prohibited in areas that are zoned exclusively residential.



Prohibited Items: selling counterfeit products, animals, insects, controlled substances, medicine, chemicals, lottery tickets, firearms, ammunition, alcohol, fireworks, cannabis or cannabis products, industrial hemp products, tobacco, tobacco-related products, adult materials, or any other items that are illegal, or unsafe for Vending.

