



department  
of economic  
opportunity  
COUNTY OF LOS ANGELES

# Resources for **Workers** and **Businesses** Impacted by the Entertainment Strikes

**JESSICA KU KIM**

Chief Deputy, Department of  
Economic Opportunity

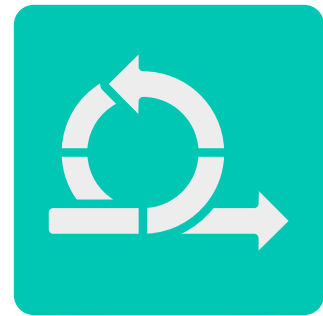
**GARY SMITH**

County Film Office, Department  
of Economic Opportunity

MONDAY, JULY 31

**WEBINAR**





**15k** small  
businesses  
work in the entertainment industry



**216k** workers  
are directly employed by the  
entertainment industry



The entertainment industry generated  
**\$205B** in goods and  
services in  
2022 alone

# Economic Impact of Creative Sector



# Who We Are

## Mission

DEO creates quality jobs, helps small businesses and high-road employers start and grow, and builds vibrant local communities and spaces.

## Vision

DEO strives for a more equitable economy with thriving local communities, inclusive and sustainable growth and opportunity and mobility for all.

## Core DEO Services:



Film and other  
High-Growth  
Industry Services



Entrepreneurship  
Development



Jobs and  
Training



Certifications and  
Contracting



Small Business  
Services



Capital Development  
and Real Estate

DEO is home to the **LA County Film Office**, which partners with FilmLA for film permitting in LA County and the City of LA.

Film  
LA



department  
of economic  
opportunity  
COUNTY OF LOS ANGELES

Get Connected  
with Team DEO!



Follow us on Facebook, Twitter,  
and Instagram @EconOppLA



Visit [opportunity.lacounty.gov](http://opportunity.lacounty.gov)



Call 844-432-4900 or email  
[deo@opportunity.lacounty.gov](mailto:deo@opportunity.lacounty.gov)  
*Please use "WGA-SAG AFTRA Webinar" in subject line*



Subscribe to DEO's newsletter  
to stay in the know!



# Resource Guide



# Financial Assistance for Impacted Workers

Need help covering immediate life expenses?

## Grants

### SAG-AFTRA Support Fund

Provides up to \$1,500 to cover immediate living expenses for dues-paying SAG-AFTRA members who can demonstrate they need assistance

**Link:** [sagaftra.foundation/emergencyfinancialassistance/](https://sagaftra.foundation/emergencyfinancialassistance/)

### Utility Assistance

PACE Energy offers a variety of utility assistance programs for low-income individuals and families

**Link:** [pacela.org/our-work/energy/](https://pacela.org/our-work/energy/)

### Motion Picture and Television Fund

Qualified industry members that have a demonstrable need due to unforeseen circumstances can apply for financial assistance to cover basic living expenses, such as housing, utility bills, and food, health care, etc.

**Link:** [mptf.com/services/#financial](https://mptf.com/services/#financial)

### Entertainment Community Fund

Provides access to social services and emergency financial assistance for immediate living expenses through a variety of relief funds

**Link:** [entertainmentcommunity.org/am-i-eligible-help](https://entertainmentcommunity.org/am-i-eligible-help)

### Los Angeles County Department of Arts and Culture grant programs

Arts and Culture regularly offers calls for artists and competitive grant programs for arts organizations. Sign up to be notified when they open:

**Link:** <https://www.lacountyarts.org/>





# Financial Assistance for Impacted Workers CONT'D

Need help covering immediate life expenses?

## Loans

### Writers Guild Good and Welfare Emergency Assistance Fund

Provides interest free loans of up to \$7,000 for WGA members in good standing

**Link:** <https://www.wga.org/members/finances/good-welfare-emergency-assistance-loans>

### SAG-AFTRA Credit Union Loans

Provides loans between \$2,500 - \$5,000 for up to 36 months for dues paying members

**Link:** [www.sagaftrafcu.org/](http://www.sagaftrafcu.org/)

### Jewish Free Loan Association

JFLA is a nonprofit loan organization that is providing 0% interest 36 month loans of up to \$3,000 to anyone affected by the strikes. These loans can be used to cover basic living expenses, including rent, food, and utilities, childcare expenses, and other emergency expenses. Borrowers must be residents of Los Angeles, Ventura, or Santa Barbara counties, demonstrate a need, cannot have a current loan with JFLA, and must have a guarantor on the loan. To learn more, click here.

**Link:** <https://www.jfla.org/personal-loans/interest-free-emergency-personal-loan>

## Have you been laid off by a business that was impacted by the entertainment strike?

### Unemployment Insurance (UI)

UI provides weekly unemployment insurance payments for workers who lose their job through no fault of their own. These benefits may apply to employees laid-off from businesses impacted by the strike. To know if you're eligible, please complete the application through the Employment Development Department here:

**Link:** <https://edd.ca.gov/>



# Capital Opportunities

Having challenges covering general business expenses?

## PACE – Small Business Grant Program

Provides grants of \$5,000 to \$10,000 to small businesses in Unincorporated Areas of LA County Supervisorial District 1. These grants can be used to cover business expenses including payroll, rent, working capital, and inventory. Applications are currently being accepted at:

**Link:** <https://pacelabdc.org/finance/pace-small-business-grant/>

I need help keeping my business doors open? Are there available loans that I might qualify for?

## U.S. Small Business Administration (SBA)

SBA offers a variety of loan programs to assist small businesses, ranging from microloans of up to \$50,000 to bank loans up to \$5 million.

**Link:** [https://www.sba.gov/funding\\_programs/loans](https://www.sba.gov/funding_programs/loans)



## Community Development Financial Institutions (CDFIs)

CDFIs are organizations that serve those left out of traditional banking. They provide financial resources for residents and small business owners, such as small business loans, personal financial services, and education and financial literacy. There are many CDFI's serving Los Angeles County. To learn more about how CDFI's can support your business, click here:

**Link:** <https://www.ofn.org/cdfi-locator/>

➤ **Local Initiatives Support Corporation (LISC):** A CDFI that offers working Capital loans from \$100,000 to \$500,000 for commercial and small businesses, as well as other loan products

**Link:** [www.lisc.org/our-model/lending/loan-products/loans-business/](http://www.lisc.org/our-model/lending/loan-products/loans-business/)



➤ **The Center by Lendistry:** Lendistry provides financing to small businesses, particularly in underserved communities and works with the SBA for small business funding and is CDFI certified.

**Link:** [thecenterbylendistry.org/services/#capital](https://thecenterbylendistry.org/services/#capital)





# Capital Opportunities CONT'D

I need help identifying new revenue generating opportunities for my business. Where can I get support?



## Office of Small Business

DEO's Office of Small Business (OSB) can help you get certified for County preference programs to give your business a leg up when bidding on County contracting opportunities. We also offer technical assistance to help you obtain contracts with a variety of public sector agencies. Thousands of certified businesses have received more than \$1 billion in County contracts in recent years. For more information contact OSB:

**Link:** <https://www.ajcc.lacounty.gov/businesses/office-of-small-business>

Also check out the Regional Alliance Marketplace for Procurement (RAMP) and LA Metro to find procurement opportunities with the City of LA and Metro:

**Link:** <https://www.metro.net/>

**Link:** <https://www.rampla.org/s/>

## ONE LA Inclusive Procurement Program

The Los Angeles Area Chamber of Commerce OneLA Inclusive Procurement Program creates pathways to contract opportunities for local, small and diverse businesses. Participating businesses have received more than \$30 million in contracts.

**Link:** [lachamber.com/index.php?src=gendocs&ref=onela](http://lachamber.com/index.php?src=gendocs&ref=onela)



# Legal Assistance



**Need assistance renegotiating commercial lease debt? Want to speak to an attorney?**

DEO and the City of LA teamed up with Bet Tzedek Legal Services and Public Counsel to provide free legal assistance to small businesses. Eligible small businesses can connect with legal experts and access ongoing webinars, one-on-one counseling, and legal academies at no cost. Click below or call 866-375-9511 to learn more.

**Link: <https://bit.ly/FreeLegalHelpToday>**



**Need free assistance mediating a business dispute?**

DCBA offers free mediation services to all LA County residents that want to settle a dispute outside of court. This includes mediation services for businesses and customers, landlords and tenants, and more. Mediation is risk-free and requests can be submitted with or without a pending court hearing.

**Link: <https://dcba.lacounty.gov/mediation/>**





# Rent and Mortgage Relief



I'm in danger of losing my housing or foreclosure of my property? Who can assist me with rent or renegotiating my lease?

## Tenant Protections

DCBA helps LA County residents with housing and tenant protections. Available to residential tenants Countywide facing unpaid rent or possible eviction; DCBA can provide information and assistance about your rights. Residential landlords can also receive information about their rights and responsibilities.

**Link:** <https://dcba.lacounty.gov/rentstabilization/>

## Resources for City of LA Renters

Certain tenant protections adopted by the City of LA during the COVID-19 pandemic come to an end August 1, 2023. Tenants have until August 1, 2023 to pay any missing rent due between March 1, 2020 and September 30, 2021. For rent due between October 1, 2021 and January 31, 2023, tenants have until February 1, 2024 to pay the missing rent. Here are resources available to support renters in the City of LA

**Link:** <https://mailchi.mp/lamayor.org/have-you-been-tested-for-covid-184222?e=94547928f6>



LOS ANGELES COUNTY  
**CONSUMER &  
BUSINESS AFFAIRS**

## Foreclosure Prevention Technical Assistance

If you are having trouble paying your mortgage or facing foreclosure, DCBA's foreclosure prevention experts can help you understand the foreclosure process and explore all available options.

**Link:** <https://dcba.lacounty.gov/foreclosure-prevention/>



# Rent and Mortgage Relief CONT'D



**Need help paying your residential rent or commercial mortgage?**

## **Mortgage Relief for Mom and Pop Landlords**

DCBA administers a program where property owners with 1 – 4 units making less than \$117,840 a year can qualify for up to \$30,000 to eliminate debt caused by the Pandemic. This program is geared toward serving those in high need areas of LA County and City of LA residents are not eligible.

**Link:** <https://nhslacounty.org/programs-and-services/mortgage-relief-program-2-0/>



**I'm couch surfing or sleeping in my car and in need of shelter. What resources are available to me?**

The Los Angeles Homeless Services Authority provides resources for individuals and households experiencing homelessness or are at-risk of experiencing homelessness. LAHSA can help connect you to shelters and other immediate housing solutions depending on your circumstances.

**Link:** <https://www.lahsa.org/get-help>



# Business Technical Assistance

How can I get support to help my small business succeed?

## DEO's Office of Small Business

The Office of Small Business helps businesses start, grow and thrive through 1:1 counseling, workshops, referrals for legal assistance and financing; certifications and preference programs for County contracting; and help in contracting with other public agencies. OSB can help you navigate services and resources highlighted today.

**Link:** [www.ajcc.lacounty.gov/businesses/office-of-small-business](http://www.ajcc.lacounty.gov/businesses/office-of-small-business)

## Small Business Development Centers (SBDC)

SBDCs throughout the region provide free business consulting and training services in all areas of operations and management, marketing, financing, and business planning.

**Link:** <https://smallbizla.org/>



## The Los Angeles Business Source Centers

Provides startups and small business owners with tools to make their business a success. Includes one-on-one consulting, entrepreneurship and business training, small business financing, tax incentives and credits, and workforce development (LA City only)

**Link:** <https://ewddlacity.com/index.php/local-business/businesssource-centers>

Also check out **Women Business Centers** including PACE and New Women's Business Center. The New Women's Business Center offers a Women in Entertainment program, among many others.

**Link:** [pacela.org](http://pacela.org) or [new-wbc.org](http://new-wbc.org)



# Workforce Development

If I need help finding a job, what do I do? If I need help hiring qualified candidates, where do I go?

## America's Job Centers of California (AJCC) and WorkSource Centers

LA County  
America's Job Center  
of California<sup>SM</sup>

LA County, the City of LA, and five other Workforce Development Boards in the region operate more than 50 Job Centers and WorkSource Centers for employers and jobseekers. For workers, these centers offer job preparation, job connections, paid work experiences, and supportive services; and for businesses, they offer recruitment and training, layoff aversion, payroll subsidies/hiring incentives and more!

**Link:** <https://www.ajcc.lacounty.gov/>

**Link:** <https://ewddlacity.com/index.php/employment-services/adults-age-24-and-older/worksource-centers>

## Youth@Work Elevate

Businesses in LA County can boost their workforce and elevate a career. Partner with us to get your business a highly motivated youth intern with 100% of the internship wages covered for up to 400 hours.

**Link:** <https://www.ajcc.lacounty.gov/>

## Pandemic Recovery Rapid Reemployment

This program helps small businesses in LA County streamline their hiring process, reduce payroll costs and build a new team. Quickly hire qualified new talent with 100% wages covered.

**Link:** <https://opportunity.lacounty.gov/how-we-help/build-back-better/pandemic-rapid-relief-re-employment/>



## LA County Library Tools for Job Seekers

Computers are available for use at the libraries or to check-out and take home. The libraries also offer free Wi-Fi and a quiet place to work. You can take online classes, watch career-related videos, explore the Work Ready book collection, research business information, find links to popular job boards and much more.

**Link:** <https://lacountylibrary.org/jobhelp/>





# Workforce Development CONT'D

I'm worried I may have to layoff my workers. What layoff aversion or post layoff resources are available?

## California Employment Development Department (EDD) Workshare Program



This program provides an alternative to layoffs if your business is experiencing financial impact by allowing payment of unemployment benefits to employees whose wages and hours have been reduced by 10 to 60%.

**Link:** <https://edd.ca.gov/>

## Business Assistance Program



The Business Assistance Program operated by DEO offers free consulting services to help businesses overcome challenges and find alternatives to layoffs. Administered by the Los Angeles Economic Development Corporation (LAEDC).

**Link:** <https://laedc.org/business-assistance/>

## Rapid Response Services

If layoffs become unavoidable, LA County, City of LA and our workforce development partners can connect affected employees to services and resources, such as new job opportunities and social services to minimize the impact.

 **Los Angeles County Rapid Response**  
[RapidResponse@opportunity.lacounty.gov](mailto:RapidResponse@opportunity.lacounty.gov)

 **City of LA Rapid Response**  
<https://ewddlacity.com/index.php/local-business/transition-services>



# Food Assistance

How do I obtain free groceries or other food assistance?

## Humanitas Fund for Groceries

Free grocery gift cards for writers impacted by the strike are available while supplies last.

**Link:** <https://www.humanitasprize.org/groceries-for-writers>

## LA County 211

Look up food pantries and other food assistance locations in communities throughout LA County



**Link:** <https://211la.org/food-resources>

## World Harvest Food Bank

World Harvest Food Bank is offering a free car of groceries to WGA and SAG-AFTRA member



**Link:** <https://www.worldharvestla.org/>

## Discounts for WGA and SAG-AFTRA Members

WGA is maintaining a spreadsheet of discounts for guild members. The price cuts cover a range of services, from 15% off a haircut to free meals or comedy shows. All you need to do is show your WGA or SAG-AFTRA card.

**Link:** <https://bit.ly/StrikeDiscounts>



# Food Assistance

How do I obtain free groceries  
or other food assistance?

## Department of Public Health

CalFresh community enrollers can screen and enroll people in CalFresh (food stamps) virtually, by appointment. They are listed on this page here:

People should call for appointment over phone. Screening for CalFresh includes screening for expedited service, to receive within three days instead of the normally-allowed up to 30 days. It very easy to apply online at [www.getcalfresh.org](http://www.getcalfresh.org)

### **Who is considered a striker?** (MPP 63-402.8)

CalFresh considers anyone involved in a strike or employee work stoppage (including a stoppage by reason of the expiration of a collective-bargaining agreement) or any concerted slowdown or interruption of operations by employees to be strikers.

### **CalFresh eligibility & how income is counted** (MPP 63-402.8)

Eligibility determinations for households with someone on strike will be based on the day before the household member went on strike. The county will compare the pre-strike income of the person on strike with that person's anticipated income during the strike (examples: strike pay, temporary employment). They will take which ever amount is higher and add it to the rest of the household's income.

Keep in mind that:

- Strikers are not allowed to qualify for CalFresh only because they lost income due to the strike. They had to have been eligible the day prior to striking in order to qualify for CalFresh during the strike.
- Households cannot be denied solely because a household member is on strike



### Department of Public Social Services

The Department of Public Social Services (DPSS) offers a vast array of programs and services that can help you connect to resources you need now! These programs have income restrictions.

- CalFresh: food benefit program for individuals and families;
- General Relief: cash assistance program for single adults;
- CalWORKS: cash assistance program for families;
- CalWORKS Childcare: may provide childcare help for up to 12 months;
- Medi-Cal: health benefits for individuals and families.

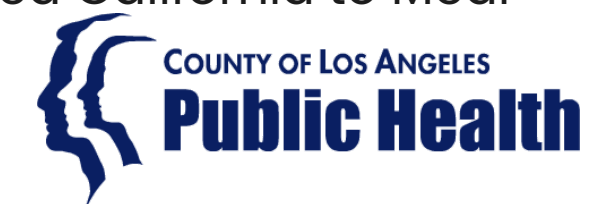


Apply for benefits: [dpss.lacounty.gov](https://dpss.lacounty.gov)

### Access to Health Services

The Department of Public Health Community Health Outreach Initiative (CHOI) can assist with enrolling into MediCal and other benefits for striking workers. There are a number of CHOI contracted providers that can assist. CHOI contractors can screen and assist with enrolling and navigating a variety of health insurance programs including Medi-Cal, Covered California, Medicare, and other low- or no-cost health insurance plans. They can also help address medical debt and moving from premium-paid Covered California to Medi-Cal. Connect with a CHOI contractor in your area!

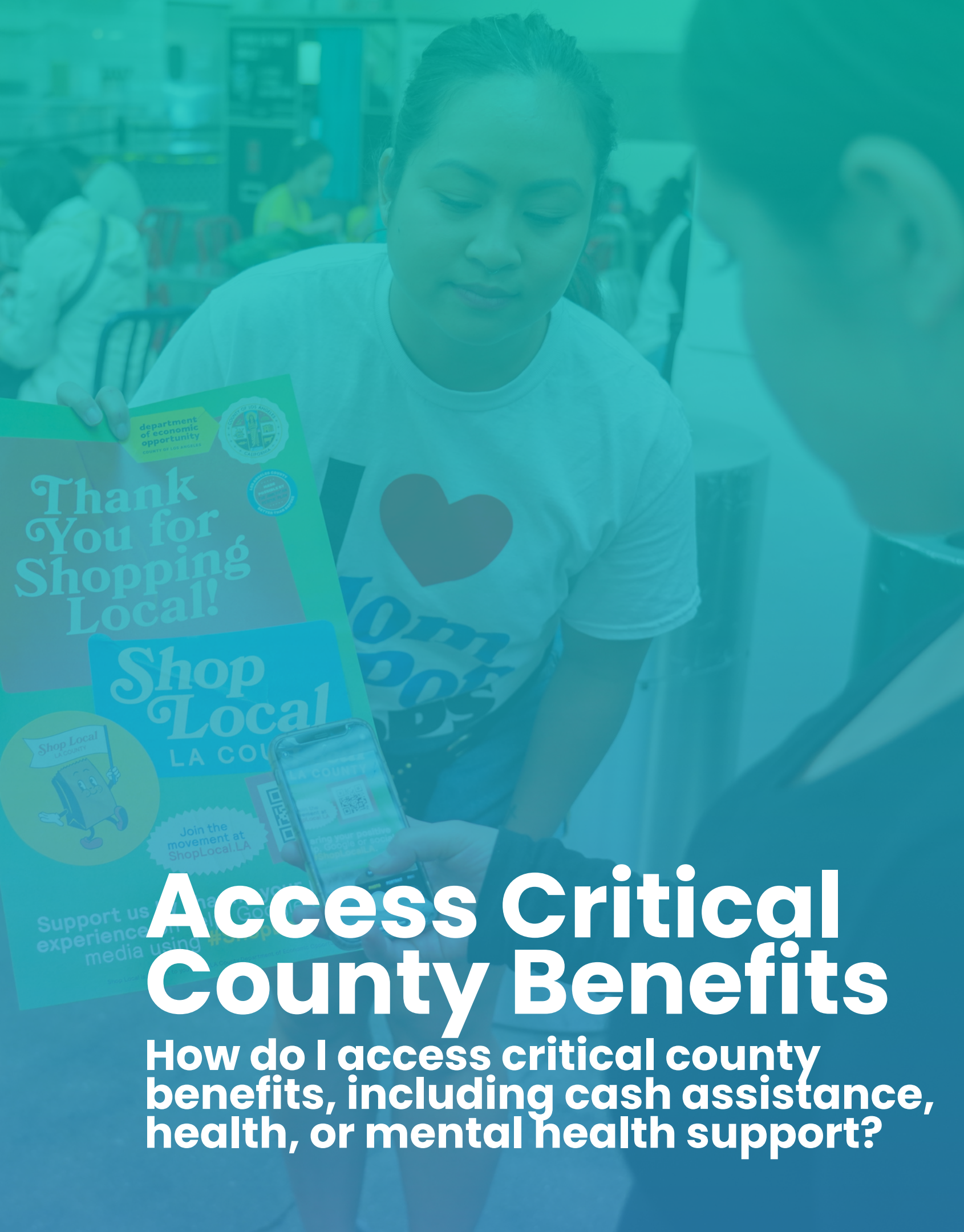
Link: <https://dmh.lacounty.gov/>



### Mental Health Services

If you need to connect with someone about counseling and support, contact LA County's Department of Mental Health at [dmh.lacounty.gov](https://dmh.lacounty.gov) or call the 24/7 Help Line at (800) 854-7771

Link: <https://dmh.lacounty.gov/>



# Access Critical County Benefits

How do I access critical county benefits, including cash assistance, health, or mental health support?



# Support for Entertainment Industry Food Vendors

As a food vendor, how can I pivot to serve the strikers right now?

## On Location Motion Picture Catering

On Location Motion Picture Catering businesses can serve the striking writers by providing a route sheet to the DPH Mobile Food Program, that shows the location(s), days of the week you want to set up.

Contact: (626) 430-5500 or at [ehvip@ph.lacounty.gov](mailto:ehvip@ph.lacounty.gov)

**Link:** <http://publichealth.lacounty.gov/eh/about/mobile-food-program.htm>

## Craft services permit holders

As a craft services permit holder, you can sell prepackaged foods as a Compact Mobile Food operator. You can sell prepackaged food items from a pushcart, stand, display, or showcase. Does not require a Public Health Permit if display area is 25 square feet or less. Must check with the City for any local restrictions.

**Link:** <http://publichealth.lacounty.gov/eh/business/compact-mobile-food-operation.htm>







**department  
of economic  
opportunity**

**COUNTY OF LOS ANGELES**

*LA County Film Office*

**Thank you!**

Email us at [deo@opportunity.lacounty.gov](mailto:deo@opportunity.lacounty.gov)