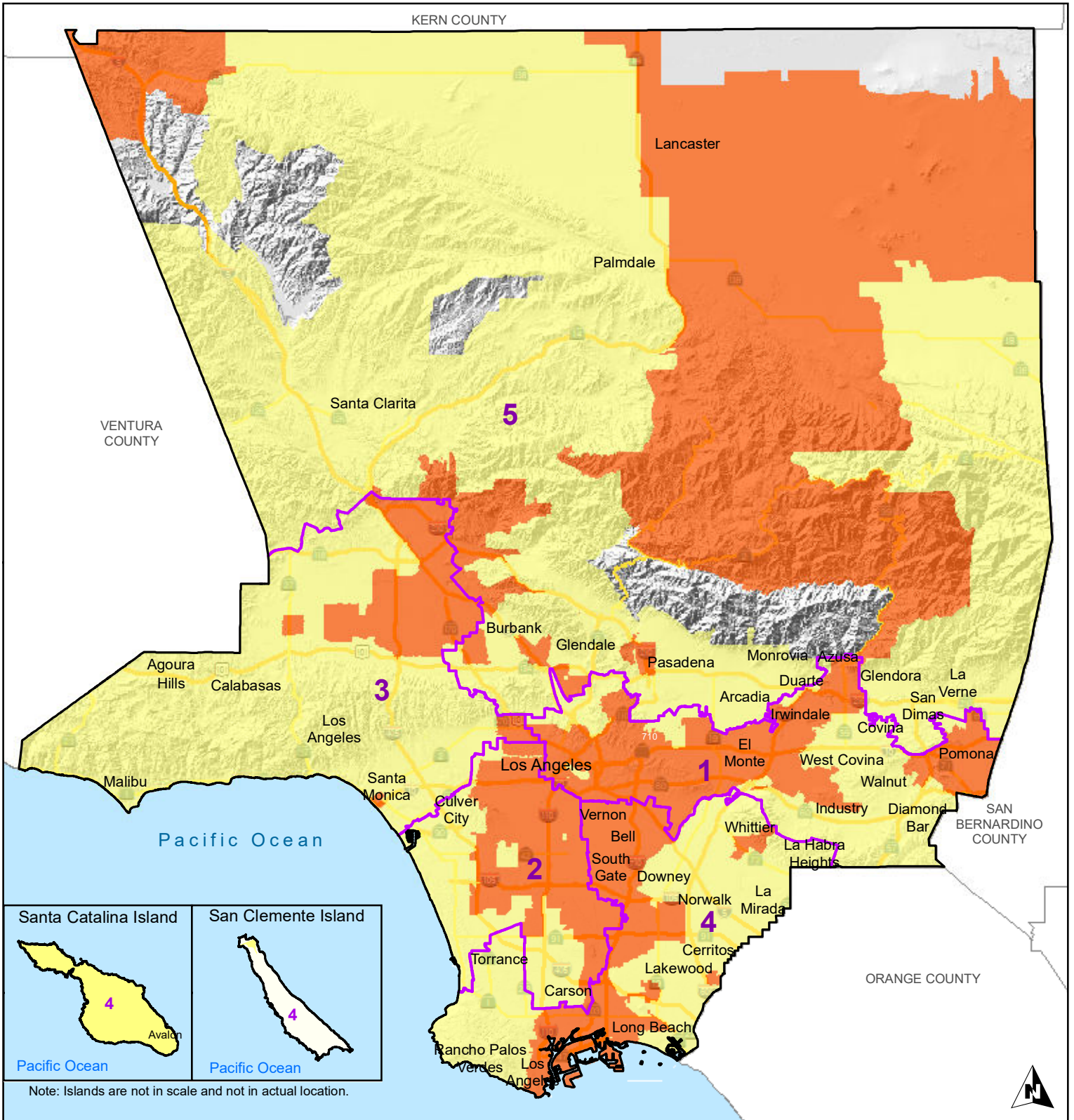
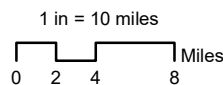


# Zip Code Tabulation Areas Where Percentage of Families Below 200% FPL is Higher Than Countywide Percentage - Los Angeles County



- Countywide Percentage of Families Below 200% FPL (<28.09%)
- Below County Percentage (<28.09%)
- Above County Percentage (>=28.09%)
- Supervisorial District Boundary
- No ZCTA

This map shows the Zip Code Tabulation Areas (ZCTAs) where the percentage of families below 200% Federal Poverty Level (FPL) is higher than countywide percentage (28.09%).  
 Source: 2020 ACS 5-YR Summary File.



**Note:** City names are in black and Sup. District numbers in violet.

Map created on: Friday, March 25, 2022; by ISD/GIS (DN).

**Disclaimer:**

This product is for informational purposes only and may not have been prepared for, or be suitable for legal, engineering, or surveying purposes. Users of this information should review or consult the primary data and information sources to ascertain the usability of the information.